

## About fusionSpan

At fusionSpan, we have top technologists with real-world experience in associations. Their expertise in technology and thorough understanding of the association world come together to provide top-of-the-line technology solutions for your organization.

Since the beginning, we've been looking toward the future. It's one of the things that sets us apart. We don't avoid moving forward just because we're comfortable with the tools we have. Instead, we work to stay current and remain at the forefront of industry technology and services.

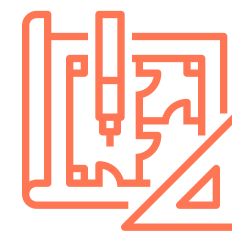


## Our Services



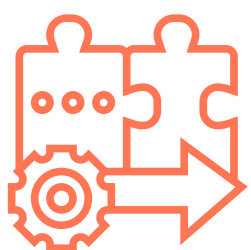
### Strategic Consulting

fusionSpan gets to know your organization's needs, pain points, and future goals, and can put together a custom technology solution that meets your needs.



### Digital Experience Design

fusionSpan creates digital strategies and website implementations that will evolve alongside changing technologies.



### Salesforce CRM & AMS Implementation

At fusionSpan, we offer state of the art Salesforce implementations, Fonteva and Nimble AMS implementations, and salesforce integrated marketing automation solutions.

fusionSpan works with the following Salesforce clouds:

- Marketing
- Service
- Experience
- Nonprofit
- Health
- Sales
- Pardot

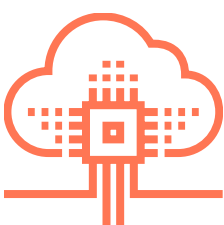


### Managed Services

fusionSpan's Managed Services team provides ongoing support for your Salesforce technology and keeps your organization running smoothly.

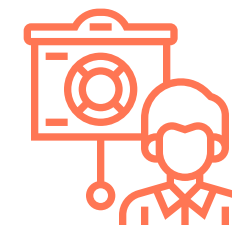
fusionSpan provides the following services:

- Upgrades & Roadmapping
- Health Checks
- Feature Enhancements
- Bug Fixes
- Vendor Liaison
- Support Portal



### Data & Integrations

fusionSpan helps you determine which technology will help you access and aggregate your data so you can better understand and, most importantly, use it.

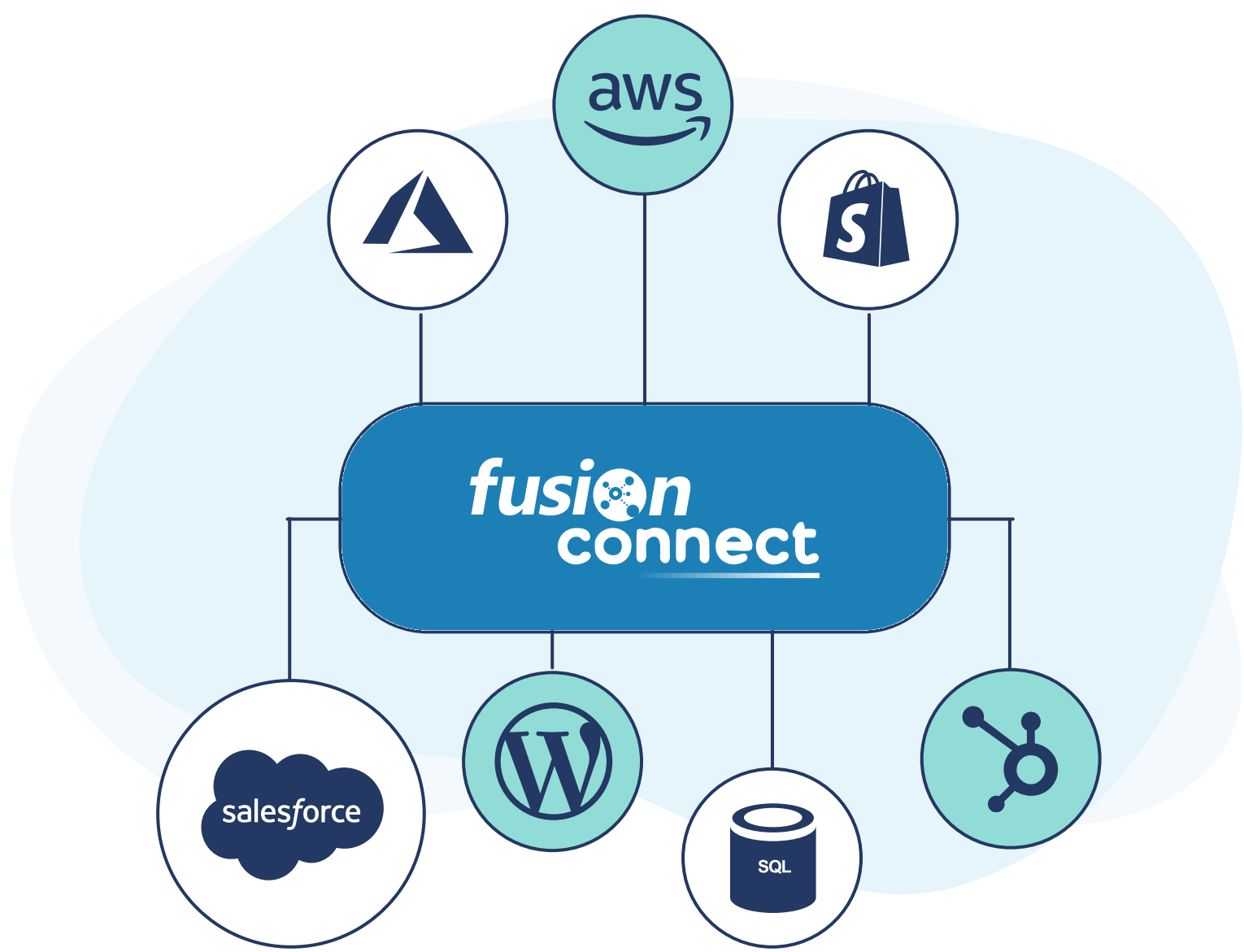


### Training

fusionSpan offers live and interactive trainings that can be customized for your organization's needs.

# Our Innovations

At fusionSpan, we develop products that tackle commonly seen problems, as well as implement custom solutions for our clients.



## fusionConnect Your Integration Platform

fusionConnect is a fully managed cloud-based Integration Platform as a Service (iPaaS) solution, also known as middleware, ensuring that your systems can share data at all times.

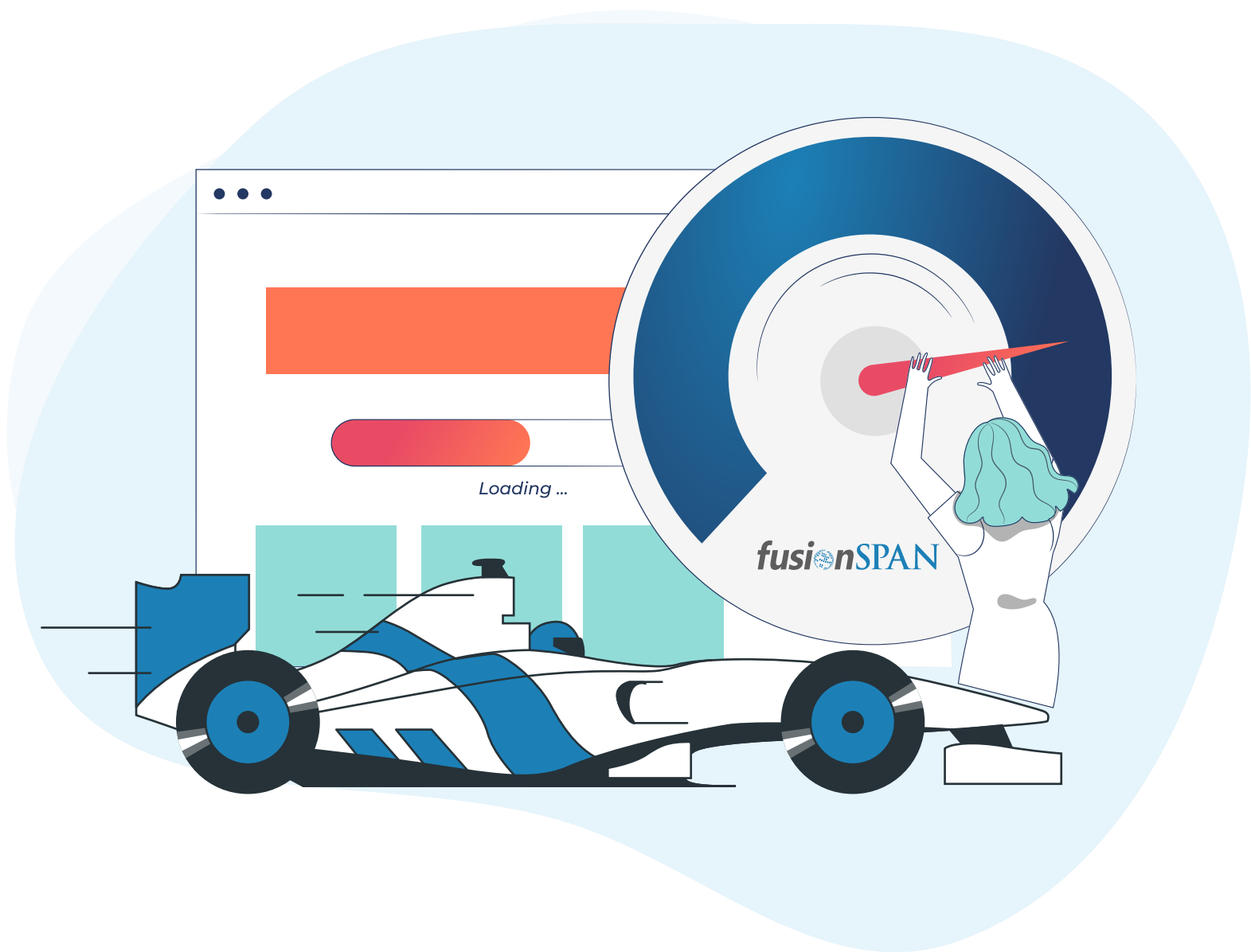
Most associations use a multitude of business applications to run their organization – including a Customer Relationship Management (CRM) or Association Management System (AMS), Learning Management System (LMS), Content Management System (CMS), Event Management, Abstract Management, Marketing Platforms, and much more. It's essential that these systems are able to share data between them in real time, so your business can operate efficiently and to its fullest potential.

## Salesforce Accelerators

Accelerators are home grown, open-source applications that enhance what you can do with your Salesforce implementation. They speed up the development of common customizations we are asked to do or issues we encounter, helping us deliver your product faster, at lower cost, and with less risk.

Why use Salesforce Accelerators

- Lower development time and cost
- You own the code, you can modify it any time
- Less customizations means less risk after launch
- Pre-built and pre-tested code packages lowers the chance of bugs or issues



## What Our Clients Are Saying



TABS has been eager to launch Fonteva for Associations, and the time is here. On the admin side, we're already seeing vastly improved business processes and internal efficiencies.

**Rob Gerth**  
Director of Marketing and Engagement



We have worked with fusionSpan from concept of our website through launch. We now work with them for servicing and technical support. Their operations are flawless, staff are talented, and provide excellent overall customer service.

**Charlie Blackburn**  
MBA, Chief Operating Officer



fusionSpan has been an invaluable partner as BIO has begun implementing both Salesforce and Fonteva AMS. They were there on Day 1 of our AMS vendor selection process and are still with us today.

**Chris Love**  
Managing Director Information Technology



fusionSpan has been an invaluable partner to ULI. They brought the technical expertise to address our AMS development and integration needs, while their business knowledge of associations has ensured we are taking a strategic approach to technology.

**Adam Smolyar**  
Chief Marketing and Membership Officer

